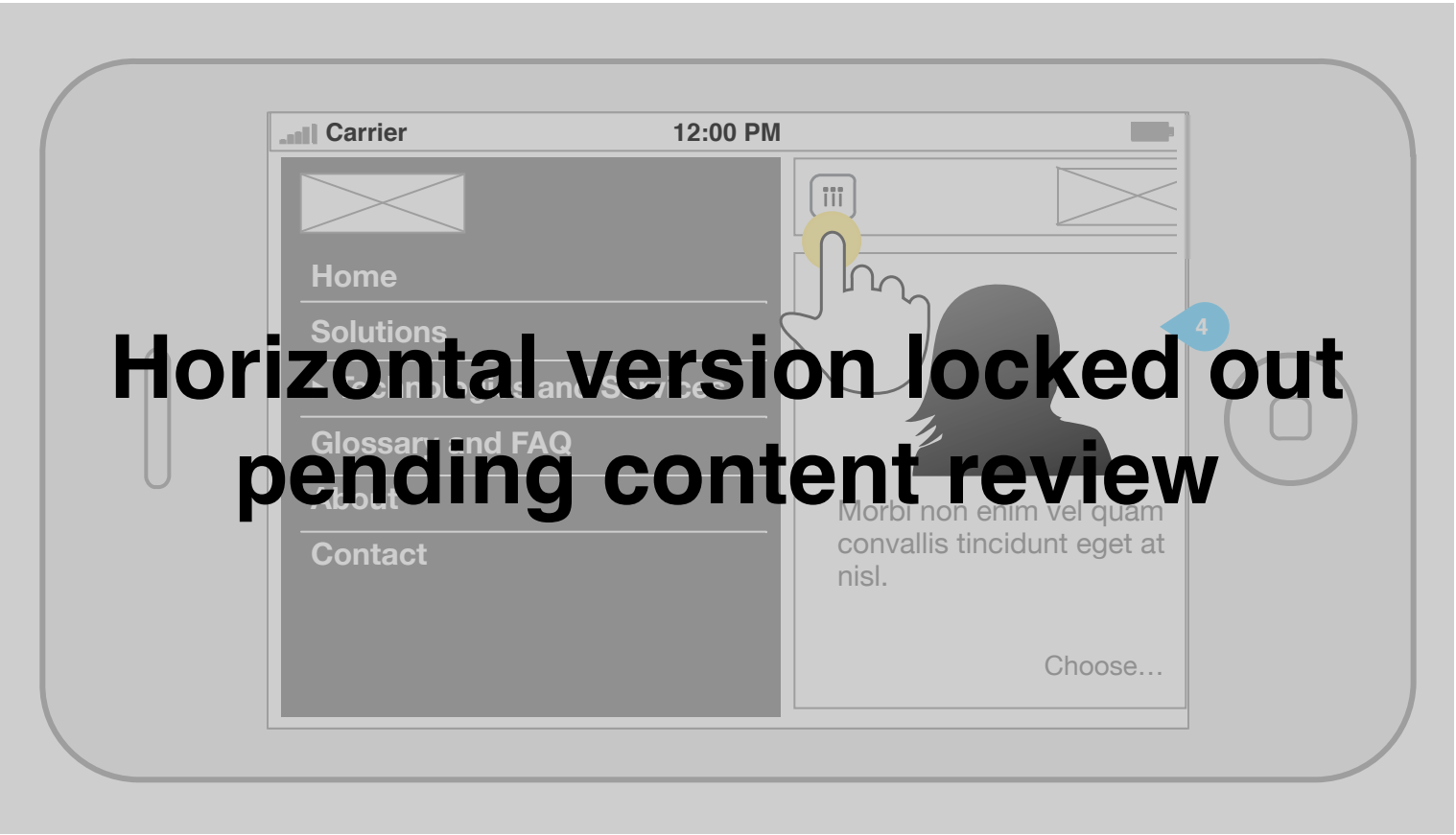
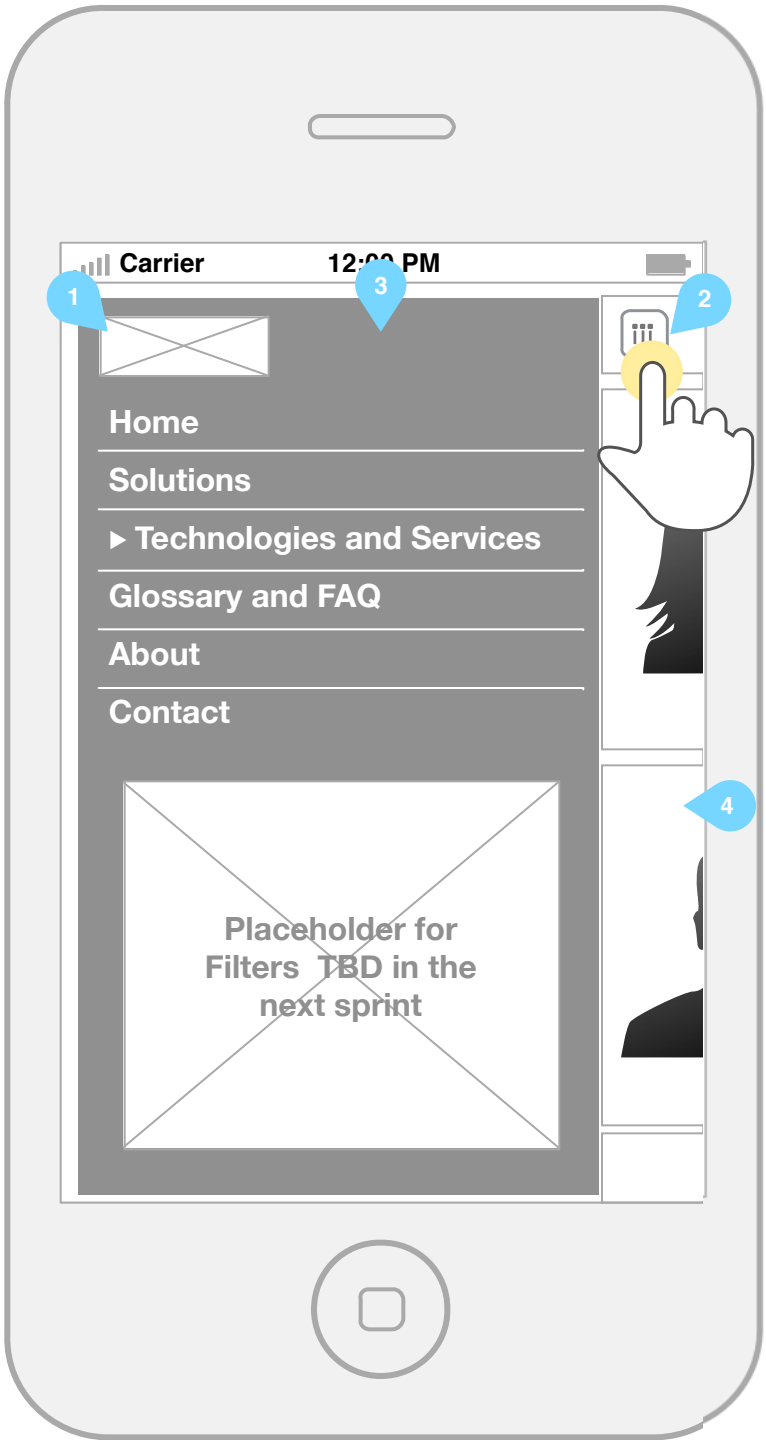


Annotations

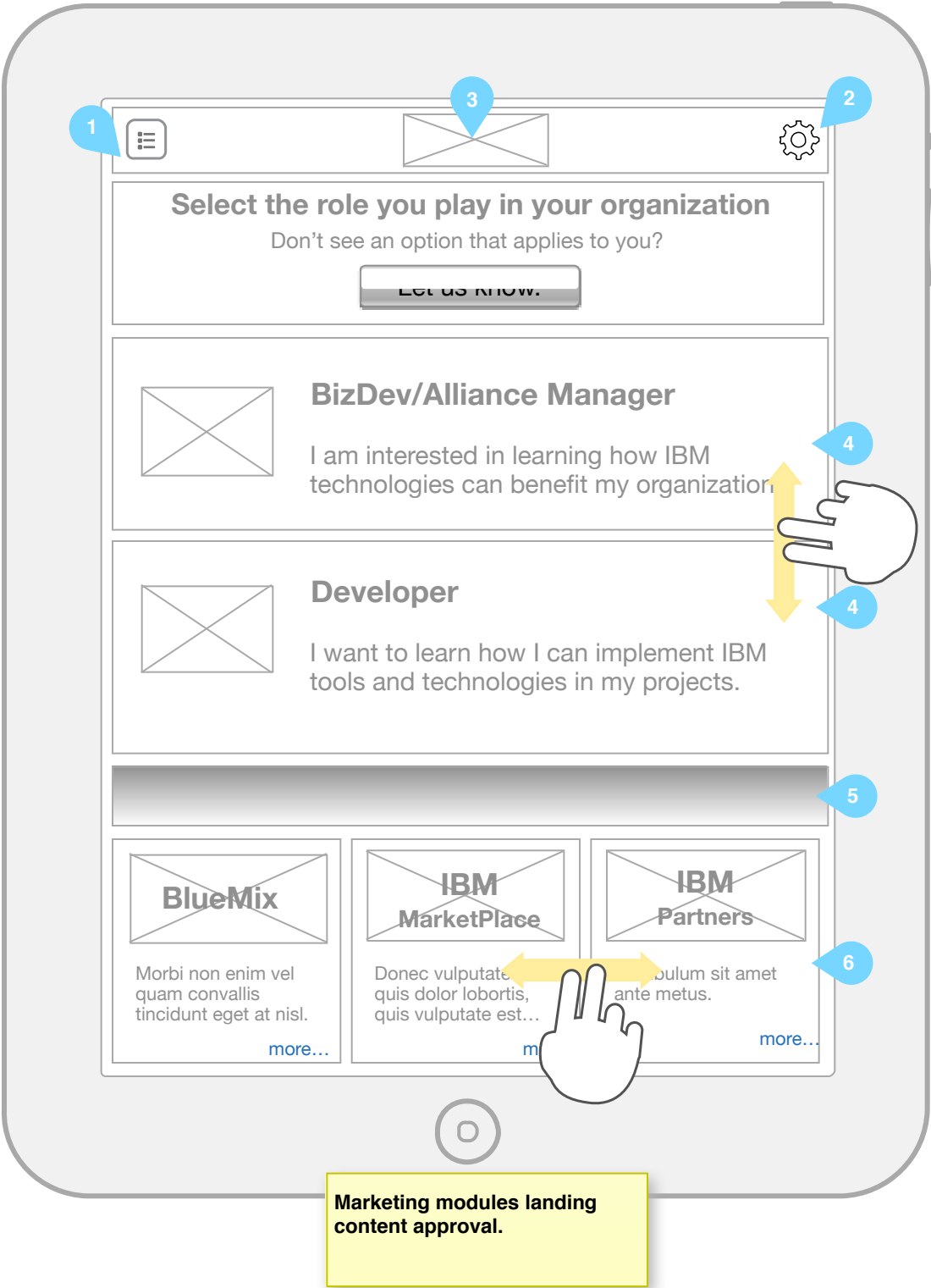
- 1. Include branding.
- 2. Rotate “Hamburger”. Slide content together with the icon. Leave partially exposed. Clicking on the icon reverses the process and shows homepage.
- 3. Use contrasting color schema to differentiate from main page.
- 4. Tapping on the visible part of content brings the main page.

Site map TBD next sprint.
design has to accommodate
for accordions.

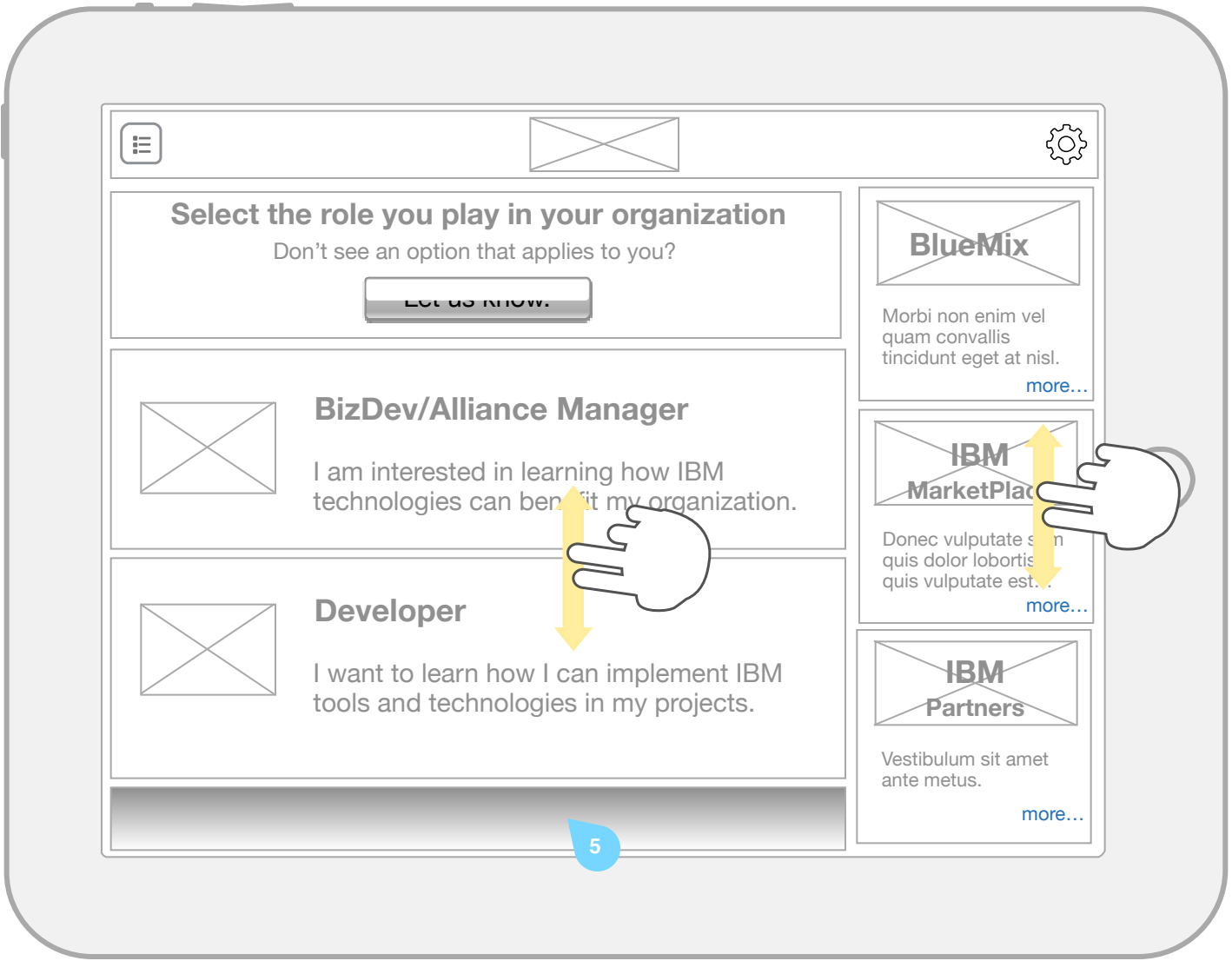


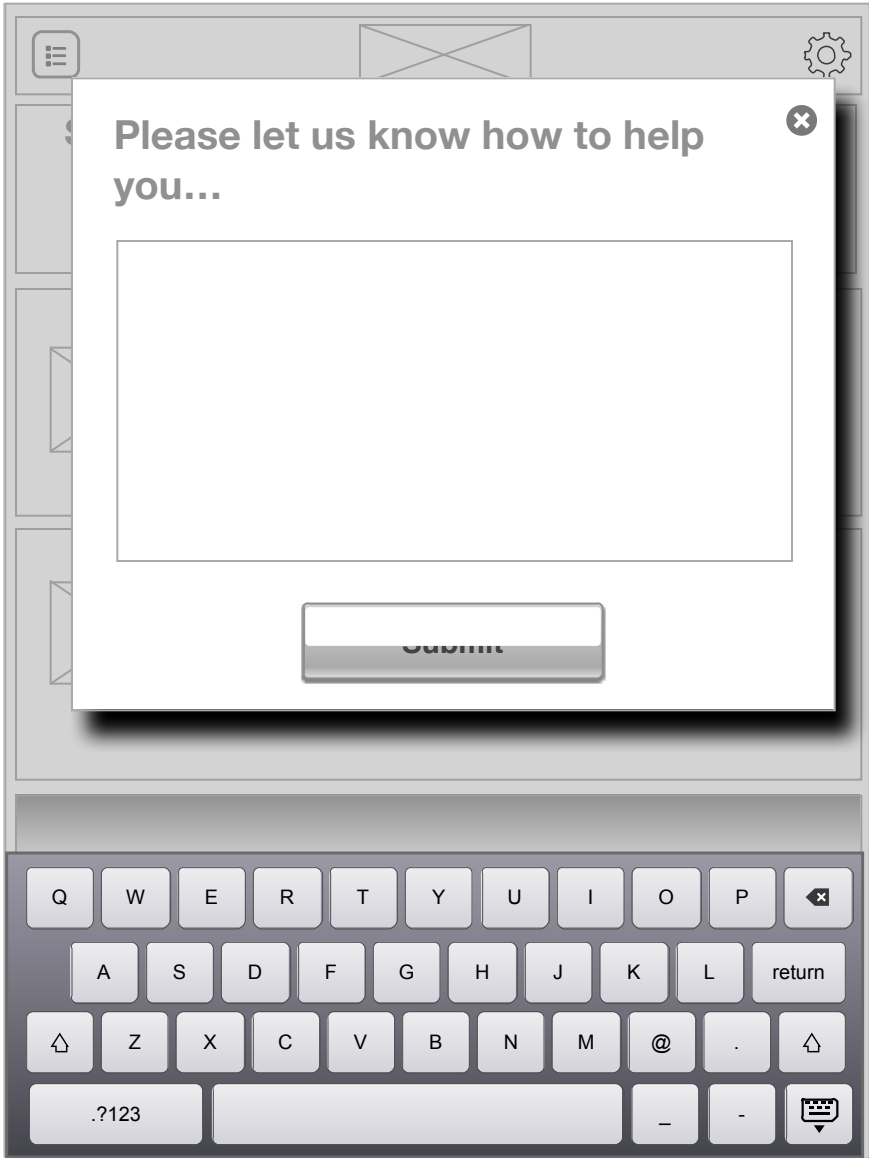
Annotations

- 1. Use “Hamburger” for site navigation.
- 2. Before and after login.
 - login and registration
 - logout and profile
- 3. Include branding.
- 4. Persona module. Copy amount to TBD.
- 5. Show partial module to indicate more modules after swipe.
- 6. Promo callouts to relevant IBM tools.



Call to action (currently "choose..." TBD during visual design.





Annotations

1. OnPageLoad show navigation expanded for a period of time that allows for loud out reading of the navigation text (5-10 sec) - (follow <https://esl008.somerslab.ibm.com/ibm/ibmer/mf/>) - Navigation items will be represented by icons in collapsed state.
2. Branding.
3. Expanded utility nav.
4. Page header.
5. Expanded persona module.
6. Promo callouts to relevant IBM tools.
7. Insert scrolling when needed.

Marketing modules landing content approval.

2

3

Login | [Registration](#) | [FAQ](#)

1

4

Select the role you play in your organization

Don't see an option that applies to you?

Let us know.

BizDev/Alliance Manager

I am interested in learning how IBM technologies can benefit my organization.

I am responsible for my company strategy, business development and sales.

I have basic understanding of mobile technologies and would like to learn how IBM is addressing this.

[Choose...](#)

I want to learn how I can implement IBM tools and technologies in my projects.

I have been building websites and mobile applications using other technologies.

I have a basic understanding of cloud technology but would like to see how IBM can contribute to my projects.

[Choose...](#)

BlueMix

Morbi non enim vel quam convallis tincidunt eget at nisl.

[more...](#)

IBM MarketPlace

Donec vulputate sem quis dolor lobortis, quis vulputate est...

[more...](#)

IBM Partners

Vestibulum sit amet ante metus.

[more...](#)


Additional Modules


Vestibulum sit amet ante metus.

[more...](#)

6

Standard Footer





Annotations

- 1. OnMouseOver show expanded navigation.

